



*Quality Products. Service Excellence.*

## ABS Plastic Multi-Purpose Enclosures w/ PC Board Standoffs 1591XX

### Series

Flame Retardant, General Purpose, Flanged Lid Options

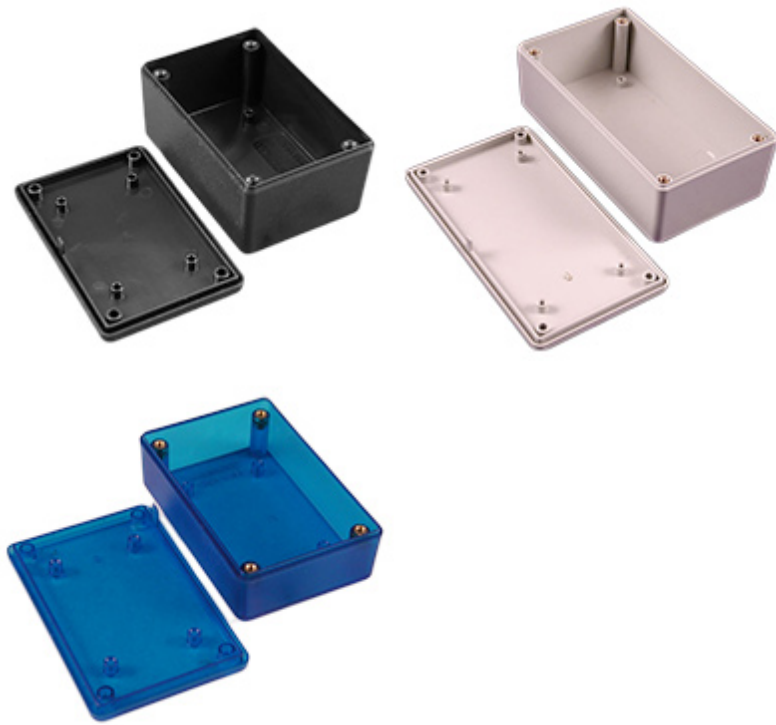
#### Key Features:



- Ideally suited for mounting printed circuit boards horizontally.
- Internal sides of enclosure are smooth for easy connector installation except for the largest enclosure. 1591XXF. 1591XXF size is a universal type which includes P.C.board standoffs in the lid and enclosure PLUS includes card guides.
- Strong tongue and groove lid to box construction provides protection against access of dust and splashing water.
- Designed to meet IP54.
- Lid and box both contain - molded in PC board standoffs.
- Standard black and gray versions molded from easy to machine, flame retardant ABS plastic (material carries a UL flammability rating of 94V-0).
- Transparent blue and all economy versions are molded from general purpose (not flame-retardant) plastic.
- Stocked in satin texture black and grey.
- On standard versions, the lid is secured with M3 x 10 mm Phillips machine screws threaded into integral brass bushings. Perfect for applications with repetitive assembly and disassembly are required.
- Economy versions are assembled with self tapping screws into fully plastic posts.
- Black and transparent blue enclosures include black screws, gray enclosures include nickel plated screws.

#### Photo Features:

Available in black, gray, or transparent blue. PC board mounting bosses located inside the box and lid.



Also available with mounting flanges integrated into the lid (black and gray only)

Accessory flanges are also available (sold separately from enclosures).



### Accessories

- Plastic Flanges

### Enclosures Without Mounting Flanges

Flame Retardant Plastic w/ Brass Screw Inserts		General Purpose ABS w/ Brass Screw Inserts	General Purpose ABS w/ Self Tapping Screws	Length	Width	Enclosure Depth (Less Lid)
Black	Gray	Transparent Blue	Black			
1591XXMBK	1591XXMGY	1591XXMTBU	1591XXMSBK	3.30	2.20	0.90
1591XXLBK	1591XXLGY	1591XXLTBU	1591XXLSBK	3.40	2.20	1.40
1591XXABK	1591XXAGY	1591XXATBU	1591XXASBK	3.90	2.00	0.80
1591XXSBK	1591XXSGY	1591XXSTBU	1591XXSSBK	4.30	3.20	1.60
1591XXBBK	1591XXBGY	1591XXBTBU	1591XXBSBK	4.40	2.50	1.10
1591XXCBK	1591XXCGY	1591XXCTBU	1591XXCSBK	4.70	2.60	1.40
1591XXTBK	1591XXTGY	1591XXTTBU	1591XXTSBK	4.80	3.20	2.20
1591XXGBK	1591XXGGY	1591XXGTBU	1591XXGSBK	4.80	3.70	1.40
1591XXUBK	1591XXUGY		1591XXUSBK	4.86	4.86	2.25
1591XXDBK	1591XXDGY	1591XXDTBU	1591XXDSBK	6.00	3.20	1.80

Flame Retardant Plastic w/ Brass Screw Inserts		General Purpose ABS w/ Brass Screw Inserts	General Purpose ABS w/ Self Tapping Screws	Length	Width	Enclosure Depth (Less Lid)
Black	Gray	Transparent Blue	Black			
1591XXEBK	1591XXEGY	1591XXETBU	1591XXESBK	7.60	4.40	2.20
1591XXFBK	1591XXFGY		1591XXFSBK	8.70	5.90	2.30

### Enclosures With Mounting Flanges

Flame Retardant Plastic w/ Brass Screw Inserts		General Purpose ABS w/ Self Tapping Screws	Length	Width	Enclosure Depth (Less Lid)
Black	Gray	Black			
1591XXMFLBK	1591XXMFLGY	1591XXMSFLBK	3.30	2.20	0.90
1591XXLFLBK	1591XXLFLGY	1591XXLSFLBK	3.40	2.20	1.40
1591XXAFLBK	1591XXAFLGY	1591XXASFLBK	3.90	2.00	0.80
1591XXSFLBK	1591XXSFLGY	1591XXSSFLBK	4.30	3.20	1.60
1591XXBFLBK	1591XXBFLGY	1591XXBSFLBK	4.40	2.50	1.10
1591XXCFLBK	1591XXCFLGY	1591XXCSFLBK	4.70	2.60	1.40
1591XXTFLBK	1591XXTFLGY	1591XXTSFLBK	4.80	3.20	2.20
1591XXGFLBK	1591XXGFLGY	1591XXGSFLBK	4.80	3.70	1.40
1591XXUFLBK	1591XXUFLGY	1591XXUSFLBK	4.86	4.86	2.25
1591XXDFLBK	1591XXDFLGY	1591XXDSFLBK	6.00	3.20	1.80
1591XXEFLBK	1591XXEFLGY	1591XXESFLBK	7.60	4.40	2.20
1591XXFFLBK	1591XXFFLGY	1591XXFSFLBK	8.70	5.90	2.30

Tags: **project box**

*Data subject to change without notice*

© 2021. Hammond Manufacturing Ltd. All rights reserved.